

# Reviewing Poetry- *Power and Conflict*

- Complete the tasks for at least 6 poems
- You can complete the sheets for all poems but you must complete a minimum of six sheets for 6 poems of your choice from the slides on the PowerPoint.

# Retrieval Phase



## Retrieval Quiz/Low Stakes Quiz

Questions:	Answers:
1. How many poems will you write about in the exam?	
2. How many poems will you have to learn in total from this section?	
3. How long to get to write your poetry comparison essay in the exam?	
4. How many poems in this section are written by female poets?	
5. Which two poems are written using non standard English?	

# Retrieval Phase



## Retrieval Quiz/Low Stakes Quiz

Questions:	Answers:
1. How many poems will you write about in the exam?	2
2. How many poems will you have to learn in total from this section?	15
3. How long to get to write your poetry comparison essay in the exam?	Approximately 45 minutes
4. How many poems in this section are written by female poets?	5
5. Which two poems are written using non standard English?	<i>Remains</i> <i>Checking out me History</i>

# The themes in the poems

## The power of humans

**Powerful people** often misuse their power to benefit themselves which leads to the suffering of ordinary people. **Ozymandias** is an arrogant and uncaring ruler in life. In **'London'**, the poor suffer because of the rich who own everything and powerful institutions such as the church and the monarchy. The Duke in **'My Last Duchess'** has his wife killed because he couldn't control her in life. The speaker in **'Checking Out Me History'**, is angry at his teachers who used their power to prevent him from learning about the history relevant to him. In **'Tissue'**, paper is used to symbolise human power but shows it to be fragile and ultimately, less powerful than nature.

## The power of nature

**Nature** is a powerful force that can cause suffering and destruction. The people in **'Storm on the Island'** try to prepare for the storm but are soon terrified; even without the storm, the wind means that nothing grows on it. The speaker in **'Exposure'** is more likely to die from the cold than the German bullets.

**Nature** is powerful enough to change humans. The boy in **'The Prelude'** starts off thinking that nature is beautiful and that he is as strong and skilled as it; however, his experience soon shows him that nature is more powerful and terrifying. The pilot in **'Kamikaze'** abandons his suicide mission when he sees the beauty of the sea below him.

## Identity

National identity has a powerful effect on other people: both the soldier in **'Bayonet Charge'** and the pilot in **'Kamikaze'** are both motivated to fight by patriotism. In the end, the pilot is more influenced by his family identity so can't bear the thought of leaving his children fatherless. The speaker in **'The Emigrée'** feels a sense of loss for the country she had to leave.

**Identity** is also about a sense who you are. The speaker in **'Checking Out Me History'** has to find out himself about his own history in order to understand himself. The speaker in **'Poppies'** is struggling to accept that her son is grown up and that her role as a mother has changed.

## Reality of conflict

**'The Charge of the Light Brigade'** shows the bravery of soldiers in the face of extreme and frightening danger. However, many of the poems show only a negative picture of warfare. The speaker in **'Exposure'** paints a bleak picture of the despair of the soldiers as they wait to die from the cold. **'Bayonet Charge'** highlights the terror of running across no-man's land into gunfire and both **'War Photographer'** and **'Remains'** reveals the brutality and extreme violence of warfare.

## Effects of conflict

**'The Charge of the Light Brigade'** highlights the huge loss of life which seems even more tragic as it the order was a mistake in the first place; yet the speaker suggests that this was a noble sacrifice of life that we should admire. Both **'War Photographer'** and **'Remains'** show that the effects of war have a lasting effect. **'Poppies'** shows the effect of conflict of those left behind when their loved ones are fighting. **'Kamikaze'** shows the sense of shame felt when someone doesn't live up to expectations of bravery and patriotism.

## 'Ozymandias' - Quick Questions: answer from memory first before checking if you're correct.

1. What is the name of the poet? \_\_\_\_\_
2. What does the name 'Ozymandias' mean and what does it suggest (two interpretations needed) \_\_\_\_\_  
\_\_\_\_\_
3. What is the form of the poem and what does this form suggest about Ozymandias?  
\_\_\_\_\_
4. What does the rhyme scheme suggest?  
\_\_\_\_\_
5. Which one of the following statements is true:
  - The poet thought that kings of his time should behave like Ozymandias
  - The poet thought that kings of his time should take Ozymandias' story as a warning about what would happen to them.
6. What is the expression on the statue's face like? \_\_\_\_\_
7. What does this suggest about Ozymandias in life? \_\_\_\_\_
8. What does the inscription on the pedestal tell other kings to do? Why is this ironic?  
\_\_\_\_\_
9. What does this suggest will happen to human power? \_\_\_\_\_
10. What does the poet suggest is stronger than human power? \_\_\_\_\_

Quote Quiz (Fill in the blanks from memory first before checking if you're correct.)

'Two \_\_\_\_\_ and \_\_\_\_\_ legs of stone'

'a \_\_\_\_\_ visage'

' \_\_\_\_\_ beside remains'

' \_\_\_\_\_ on my works, ye \_\_\_\_\_ and \_\_\_\_\_'

' \_\_\_\_\_ lip and \_\_\_\_\_ of \_\_\_\_\_ command'

' \_\_\_\_\_ and bare'

'the \_\_\_\_\_ and level sands \_\_\_\_\_ far away'



**Tell the story of the poem in six images**

--	--	--	--	--	--

Quote	Method/ Key words	Why is this important?
'Two vast and trunkless legs of stone'		
'Nothing beside remains'		
'Look on my works, ye Mighty and despair'		
'wrinkled lip and sneer of cold command'		
'the lone and level sands stretch far away'		

Which of the poems could you compare it too and why?
I could compare it to _____ because they are both about _____
I could compare it to _____ because they are both about _____
I could compare it to _____ because they are both about _____
I could compare it to _____ because they are both about _____



How does it link to the themes? (explain in detail, using quotes)

**'London' - Quick Questions: answer from memory first before checking if you're correct.**

1. What is the name of the poet? \_\_\_\_\_
2. Which of these two statements are true?
  - The poet thought the rich and powerful were responsible for the suffering of London's poor.
  - The poet admired the rich and powerful.
3. What is the poet doing in the poem? \_\_\_\_\_ -
3. What does the word 'chartered' mean in the quote 'chartered street'? \_\_\_\_\_
4. What sort of people does this represent? \_\_\_\_\_
5. What does he see in the faces of the poor? \_\_\_\_\_
6. What does 'mind-forged manacles' suggest about London's poor?  
\_\_\_\_\_
7. What example of child labour does the poet give? \_\_\_\_\_
8. Why might the churches be 'black'ning'? Give two reasons:
  - \_\_\_\_\_
  - \_\_\_\_\_
9. What does 'Runs in blood down palace walls' suggest might happen if things don't change?  
\_\_\_\_\_
10. Why do the 'youthful harlots' curse their new-born babies? \_\_\_\_\_
11. What does Blake suggest these babies' lives are going to be like? \_\_\_\_\_
12. Which quote opposite suggest that even the rich suffer in London? \_\_\_\_\_
13. What is the form of the poem and what does this suggest? \_\_\_\_\_  
\_\_\_\_\_

Quote Quiz (Fill in the blanks from memory first before checking if you're correct.)

' \_\_\_\_\_ street... \_\_\_\_\_  
Thames'

'Marks of \_\_\_\_\_, marks of  
\_\_\_\_\_'

'In every infant's \_\_\_\_\_ of  
\_\_\_\_\_'

'The \_\_\_\_\_ - \_\_\_\_\_  
manacles I hear'

Runs in \_\_\_\_\_ down \_\_\_\_\_  
\_\_\_\_\_

' \_\_\_\_\_ church'

'blights with \_\_\_\_\_ the marriage  
\_\_\_\_\_'



**Tell the story of the poem in six images**

--	--	--	--	--	--

Quote	Method/ Key words	Why is this important?
'chartered street...chartered Thames'		
'Marks of weakness, marks of woe'		
'In every infant's cry of fear'		
'The mind-forged manacles I hear'		
'black'ning church'		
'runs in blood down palace walls'		
'blights with plagues the marriage hearse'		

Which of the poems could you compare it too and why?
I could compare it to _____ because they are both about _____
I could compare it to _____ because they are both about _____
I could compare it to _____ because they are both about _____



How does it link to the themes? (explain in detail, using quotes)



**'My Last Duchess' - Quick Questions: answer from memory first before checking if you're correct.**

1. What is the name of the poet? \_\_\_\_\_
2. What is the form of this poem and what does it suggest about the Duke? \_\_\_\_\_  
\_\_\_\_\_
3. Describe and explain the effect of the rhythm and rhyme in this poem. \_\_\_\_\_  
\_\_\_\_\_
4. Explain the effect of enjambment in the poem. \_\_\_\_\_
5. What quotes suggest that the Duke objectifies women? \_\_\_\_\_  
\_\_\_\_\_
5. Name three things the Duke disliked about his wife?
  - \_\_\_\_\_
  - \_\_\_\_\_
  - \_\_\_\_\_
6. Which quote opposite shows that the Duke thinks his wife should have been grateful to him?  
\_\_\_\_\_
7. How does the poet reveal what happened to the Duchess? \_\_\_\_\_
8. The Duke is showing round a messenger from a neighbouring count around his castle. Why?  
\_\_\_\_\_
9. Why do you think the Duke showed the messenger of his dead wife?  
\_\_\_\_\_
10. In what way is the Duke like Neptune? \_\_\_\_\_

**Quote Quiz (Fill in the blanks from memory first before checking if you're correct.)**

' \_\_\_\_\_ as she were if \_\_\_\_\_ '

'My \_\_\_\_\_ at her breast'  
'too soon \_\_\_\_\_ '

'My \_\_\_\_\_ of a \_\_\_\_\_ -  
years-old- \_\_\_\_\_ '

'I choose/never to \_\_\_\_\_ '

'I gave \_\_\_\_\_ ;/Then all  
smiles \_\_\_\_\_ together'

'Neptune... \_\_\_\_\_ a \_\_\_\_\_ '



**Tell the story of the poem in six images**

--	--	--	--	--	--

Quote	Method/ Key words	Why is this important?
'Looking as she were if alive'		
'My favour at her breast'		
'My gift of a nine-hundred-years-old-name'		
'I choose/never to stoop'		
'I gave commands;/Then all smiles stopped together'		
'Neptune...taming a sea-horse'		

Which of the poems could you compare it too and why?
I could compare it to _____ because they are both about _____
I could compare it to _____ because they are both about _____
I could compare it to _____ because they are both about _____



How does it link to the themes? (explain in detail, using quotes)

**'Tissue' - Quick Questions: answer from memory first before checking if you're correct.**

1. What is the name of the poet? \_\_\_\_\_
2. a. Which of these two statements are true?
  - The poet believes our lives should be more controlled
  - The poet believes our lives should be more open and freeb. Choose a quote to support the correct answer \_\_\_\_\_
3. Give two examples of how paper controls our lives:
  - \_\_\_\_\_
  - \_\_\_\_\_
4. How can paper be a metaphor for human power? \_\_\_\_\_
5. What is the effect of the enjambment in the poem? \_\_\_\_\_
6. Explain how the poet uses one method to criticise our obsession with paper: \_\_\_\_\_  
\_\_\_\_\_
7. What could 'light' be a symbol of? \_\_\_\_\_
8. How does the poet suggest we take too much care of paper? \_\_\_\_\_
9. In what way is nature shown to be more powerful than humans? \_\_\_\_\_  
\_\_\_\_\_
10. What does the poet mean 'by let the daylight break/through capitals and monoliths'? \_\_\_\_\_  
\_\_\_\_\_
11. How does the poet link paper to the human body? \_\_\_\_\_
12. Is this poem more about power or conflict? Explain your answer. \_\_\_\_\_  
\_\_\_\_\_

**Quote Quiz (Fill in the blanks from memory first before checking if you're correct.)**

"Paper that lets the \_\_\_\_\_  
\_\_\_\_\_/ this is what  
\_\_\_\_\_alter \_\_\_\_\_"

"pages \_\_\_\_\_ and  
\_\_\_\_\_and turned"

"Maps too. The sun \_\_\_\_\_/their  
\_\_\_\_\_"

"Fine slips [...] might fly our \_\_\_\_\_ like  
paper \_\_\_\_\_"

'through the \_\_\_\_\_ that  
\_\_\_\_\_ can make'

"the daylight \_\_\_\_\_ through \_\_\_\_\_"

'a \_\_\_\_\_ design with \_\_\_\_\_'



**Tell the story of 'Tissue' in six images**

--	--	--	--	--	--

Quote	Method/ Key words	Why is this important?
"pages smoothed and stroked and turned"		
"Maps too. The sun shines through/their borderlines"		
"Fine slips [...] might fly our lives like paper kites"		
"through the shapes that pride can make"		
"the daylight break/through capitals"		
"a grand design/ with living tissue"		

Which of the poems could you compare it too and why?
I could compare it to _____ because they are both about _____
I could compare it to _____ because they are both about _____
I could compare it to _____ because they are both about _____



How does it link to the themes? (explain in detail, using quotes)

**'Storm on the Island' - Quick Questions: answer from memory first before checking if you're correct.**

1. What is the name of the poet? \_\_\_\_\_
2. What do the islanders do to prepare for the storm? \_\_\_\_\_
3. Why does nothing grow on the island? \_\_\_\_\_
4. Why would the islanders like to have trees on the island? \_\_\_\_\_
5. How does the poet use sound in the poem? \_\_\_\_\_  
\_\_\_\_\_
6. What is the effect of the enjambment and caesura in the poem? \_\_\_\_\_  
\_\_\_\_\_
7. What is it that 'pummels' the islanders' houses? \_\_\_\_\_
8. What oxymoron describes the sound of the sea as it hits the cliffs? \_\_\_\_\_
9. What marks the volta in the poem and how does the tone change? \_\_\_\_\_  
\_\_\_\_\_
10. How does Heaney show the change in the sea? \_\_\_\_\_
11. a. What semantic field is used in the poem to create an extended metaphor? \_\_\_\_\_  
b. What does this suggest about the way the islanders feel about nature? \_\_\_\_\_
12. What does the quote 'it is a huge nothing that we fear' tell us? \_\_\_\_\_

**Quote Quiz (Fill in the blanks from memory first before checking if you're correct.)**

'\_\_\_\_\_ are prepared: we \_\_\_\_\_  
our \_\_\_\_\_ squat'

'pummels \_\_\_\_\_ \_\_\_\_\_'

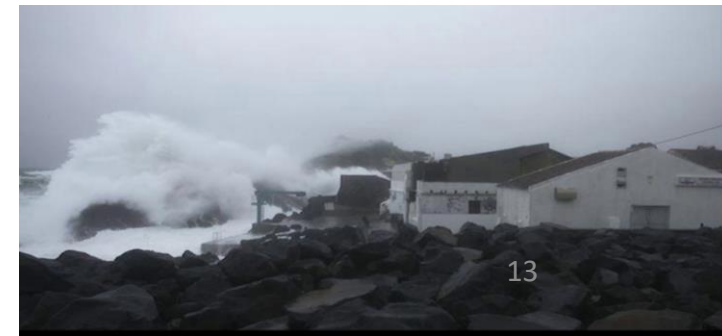
'exploding \_\_\_\_\_'

'spits like a \_\_\_\_\_ cat/turned  
\_\_\_\_\_'

'wind \_\_\_\_\_/And \_\_\_\_\_ invisibly'

'\_\_\_\_\_ by the empty \_\_\_\_\_'

'it is a \_\_\_\_\_ nothing that we \_\_\_\_\_'



**Tell the story of 'Storm on the Island' in six images**

--	--	--	--	--	--

Quote	Method/ Key words	Why is this important?
'We are prepared: we build our houses squat'		
'pummels your house'		
'exploding comfortably'		
'spits like a tame cat/turned savage'		
'wind dives/And strafes invisibly'		
'bombarded by the empty air'		
'it is a huge nothing that we fear'		

Which of the poems could you compare it too and why?
I could compare it to _____ because they are both about _____
I could compare it to _____ because they are both about _____
I could compare it to _____ because they are both about _____
I could compare it to _____ because they are both about _____



How does it link to the themes? (explain in detail, using quotes)

**'The Prelude' - Quick Questions: answer from memory first before checking if you're correct.**

1. What is the name of the poet? \_\_\_\_\_
2. This extract is from a much longer poem. What is the theme of that longer poem and how does it fit with the extract? \_\_\_\_\_
3. How does the use of pronouns to describe nature change and what is the effect? \_\_\_\_\_  
\_\_\_\_\_
4. Why does the boy feel guilty when he takes the boat? \_\_\_\_\_
5. Which quote shows the boy finds the landscape beautiful? \_\_\_\_\_
6. a. Which quote opposite makes the boy seem confident at first? \_\_\_\_\_  
b. Which word in this quote suggests that this confidence is misplaced? \_\_\_\_\_
7. Why is the boy so shaken by the second peak appearing over the **boundary**? \_\_\_\_\_
8. How does the poet make this peak seem menacing? \_\_\_\_\_
9. What does the boy learn from this experience? \_\_\_\_\_
3. How do we know that this experience affects the boy for a long time? \_\_\_\_\_

**Quote Quiz (Fill in the blanks from memory first before checking if you're correct.)**

'Small circles \_\_\_\_\_ idly in the moon...  
of \_\_\_\_\_'

'She was an \_\_\_\_\_

'\_\_\_\_\_, \_\_\_\_\_ the water like a  
\_\_\_\_\_'

'a huge \_\_\_\_\_, black and  
huge... \_\_\_\_\_ its \_\_\_\_\_'

'measured motion... \_\_\_\_\_ after \_\_\_\_\_'

"huge and \_\_\_\_\_ forms, that do  
not \_\_\_\_\_...were a \_\_\_\_\_ to  
my \_\_\_\_\_'



**Tell the story of 'The Prelude' in six images**

--	--	--	--	--	--

Quote	Method/ Key words	Why is this important?
'Small circles glittering idly in the moon... of sparkling light'		
'heaving through the water like a swan'		
'a huge peak, black and huge... upreared its head'		
'measured motion...strode after me'		
'huge and mighty forms, that do not live...were a trouble to my dreams'		

Which of the poems could you compare it too and why?
I could compare it to _____ because they are both about _____
I could compare it to _____ because they are both about _____
I could compare it to _____ because they are both about _____



How does it link to the themes? (explain in detail, using quotes)



**'Exposure' - Quick Questions: answer from memory first before checking if you're correct.**

1. What is the name of the poet? \_\_\_\_\_
2. What could the title be referring to? Come up with at least two interpretations. \_\_\_\_\_  
\_\_\_\_\_
3. What is the effect of the use of rhyme in the poem? \_\_\_\_\_
4. Where is the speaker and what is he doing? \_\_\_\_\_
5. What does the use of personification suggest about the speaker's feelings about nature? \_\_\_\_\_  
\_\_\_\_\_
6. What does the word 'merciless' tell us about the wind? \_\_\_\_\_
7. How is sound used in the poem? \_\_\_\_\_
8. What is the effect of the present tense in the poem? \_\_\_\_\_
9. What does the poet suggest about God? \_\_\_\_\_
10. What do the men dream about? \_\_\_\_\_
11. Whose eyes are ice and why? \_\_\_\_\_
12. What is the effect of the poet ending the last stanza in the same way as the first? \_\_\_\_\_

**Quote Quiz (Fill in the blanks from memory first before checking if you're correct.)**

'\_\_\_\_\_ iced east \_\_\_\_\_  
that knife us...'

'But \_\_\_\_\_ happens'

'like a \_\_\_\_\_ rumour of some other  
\_\_\_\_\_'

'\_\_\_\_\_ are we \_\_\_\_\_ here?'  
'Is it that we are \_\_\_\_\_?'

'\_\_\_\_\_ successive flights of bullets  
streak the silence/\_\_\_\_\_ deadly than the  
\_\_\_\_\_'

'on us the \_\_\_\_\_ are \_\_\_\_\_'

'For love of \_\_\_\_\_'

'All their \_\_\_\_\_ are ice'



**Tell the story of 'Exposure' in six images**

--	--	--	--	--	--

Quote	Method/ Key words	Why is this important?
'merciless iced east winds that knive us...'		
'But nothing happens'		
'like a dull rumour of some other war'		
'Is it that we are dying?'		
'Sudden successive flights of bullets streak the silence/Less deadly than the air'		
'All their eyes are ice'		

Which of the poems could you compare it too and why?
I could compare it to _____ because they are both about _____
I could compare it to _____ because they are both about _____
I could compare it to _____ because they are both about _____



How does it link to the themes? (explain in detail, using quotes)

## Reality of conflict

Colour code the quotations to show which poem they are from.

The Charge of the Light Brigade

Bayonet Charge

'Into the valley of Death/Rode the six hundred	'Suddenly he awoke and was running – raw'	'Theirs but to do or die'
'Bullets smacking the belly out of the air'	'He lugged a rifle numb as a smashed arm'	'Stormed at with shot and shell/Boldly they rode and well'
'Plunged in the battery-smoke'	'King, honour, human dignity. Etcetera/dropped like luxuries'	'When can their glory fade?'
'The patriotic tear that had brimmed in his eye'	'while horse and hero fell'	'stumbling across a field of clods'
'His terror's touchy dynamite'	'Honour the Light Brigade'	

What other poems are about the reality of conflict?

**Tell the story of 'The Charge of the Light Brigade' in six images**

--	--	--	--	--	--

Quote	Method/ Key words	Why is this important?
'Into the valley of Death/Rode the six hundred'		
'Theirs but to do or die'		
Stormed at with short and shell/Boldly they rode and well'		
'Plunged in the battery-smoke'		
'When can their glory fade?'		
'Honour the Light Brigade'		

Which of the poems could you compare it too and why?
I could compare it to _____ because they are both about _____
I could compare it to _____ because they are both about _____
I could compare it to _____ because they are both about _____



How does it link to the themes? (explain in detail, using quotes)

**'Bayonet Charge' - Quick Questions: answer from memory first before checking if you're correct.**

1. What is the name of the poet? \_\_\_\_\_
2. What is the effect of the alliteration in 'hot khaki, his sweat heavy'? \_\_\_\_\_
3. How does the soldier's views on patriotism change? \_\_\_\_\_
4. How does the poet show the soldier's confusion? \_\_\_\_\_
5. How does the poet show the violence of the battle? \_\_\_\_\_
6. Why does the soldier stop for a moment? \_\_\_\_\_
7. What is the effect of the enjambment in the poem? \_\_\_\_\_
8. What is the poet the importance of the hare? \_\_\_\_\_
9. What is the difference between man and the natural world compared to Ozymandias or Exposure? \_\_\_\_\_  
\_\_\_\_\_
10. Why compare 'King, honour, human dignity to luxuries? \_\_\_\_\_
11. How does the poet show the soldier's extreme fear? \_\_\_\_\_  
\_\_\_\_\_

**Quote Quiz (Fill in the blanks from memory first before checking if you're correct.)**

'\_\_\_\_\_ he \_\_\_\_\_ and was running – \_\_\_\_\_'

'\_\_\_\_\_ across a field of \_\_\_\_\_'

'\_\_\_\_\_ smacking the \_\_\_\_\_ out of the \_\_\_\_\_'

'He \_\_\_\_\_ a rifle \_\_\_\_\_ as a \_\_\_\_\_ arm'

'The \_\_\_\_\_ tear that had \_\_\_\_\_ in his eye'

'\_\_\_\_\_, \_\_\_\_\_, human dignity. Etcetera/dropped like luxuries'

'His terror's \_\_\_\_\_',  
\_\_\_\_\_



**Tell the story of 'Bayonet Charge' in six images**

--	--	--	--	--	--

Quote	Method/ Key words	Why is this important?
'stumbling across a field of clods'		
'Bullets smacking the belly out of the air'		
'He lugged a rifle numb as a smashed arm'		
'The patriotic tear that had brimmed in his eye'		
'King, honour, human dignity. Etcetera/dropped like luxuries'		
'His terror's touchy dynamite'		

Which of the poems could you compare it too and why?
I could compare it to _____ because they are both about _____
I could compare it to _____ because they are both about _____
I could compare it to _____ because they are both about _____



How does it link to themes? (explain in detail, using quotes)

## The effects of conflict

Colour code the quotations to show which poem they are from.

Remains

Poppies

War Photographer

'spasms of paper red, disrupting a blockade'	'probably armed, possibly not'	'spools of suffering set out in ordered rows'
'myself and somebody else and somebody else'	'He has a job to do.'	'Sellotape bandaged around my hand'
'his hands, which did not tremble then'	'I wanted to graze/my nose across the tip of your nose'	'it rips through his life'
'tosses his guts back into his body'	'to do what someone must'	'my stomach busy/making tucks, darts, pleats'
'without reinforcements of scarf, gloves'	'A hundred agonies'	'End of story, except not really'
'the drink and drugs won't flush him out'	'hoping to hear/your playground voice'	'The reader's eyeballs prick/with tears between the bath and pre-lunch beers.'
'they do not care.'	'dug in behind enemy lines'	'I traced/the inscriptions on the war memorial'
'to do what someone must'		

What other poems are about the reality of conflict?

**'Remains' - Quick Questions: answer from memory first before checking if you're correct.**

1. What is the name of the poet? \_\_\_\_\_
2. Give two possible meanings of the word 'remains' and explain how each could link to the poem:
  - \_\_\_\_\_
  - \_\_\_\_\_
3. What is the effect of using the present tense to describe the past event? \_\_\_\_\_
4. How does the poet show the speaker's uncertainty? \_\_\_\_\_
4. How does the speaker's view on responsibility change by the end of the poem? \_\_\_\_\_
5. What do they do with the dying man? \_\_\_\_\_
6. What is the effect of the colloquial language? \_\_\_\_\_
7. How does the poet emphasise the brutality of the event? \_\_\_\_\_
8. At the start of the poem the focus is on the events at the time. What does the focus switch to after 'End of story'? \_\_\_\_\_
9. What does this tell us about the speaker? \_\_\_\_\_
10. What does the speaker do to try and forget the memory? \_\_\_\_\_
11. Which of the quotes opposite show that this memory is going to be difficult to forget?  
\_\_\_\_\_

**Quote Quiz (Fill in the blanks from memory first before checking if you're correct.)**

'\_\_\_\_\_ armed, \_\_\_\_\_ not'

'myself and \_\_\_\_\_  
\_\_\_\_\_ and somebody else'

'it \_\_\_\_\_ through his \_\_\_\_\_'

'\_\_\_\_\_ his guts \_\_\_\_\_ into his  
body'

'\_\_\_\_\_ of story, except \_\_\_\_\_  
really'

'the \_\_\_\_\_ and drugs \_\_\_\_\_ flush him  
\_\_\_\_\_'

\_\_\_\_\_ in behind \_\_\_\_\_ lines'





**Tell the story of 'Remains' in six images**

--	--	--	--	--	--

Quote	Method/ Key words	Why is this important?
'probably armed, possibly not'		
'myself and somebody else and somebody else'		
'it rips through his life'		
'tosses his guts back into his body'		
'End of story, except not really'		
'the drink and drugs won't flush him out'		
'dug in behind enemy lines'		

Which of the poems could you compare it too and why?
I could compare it to _____ because they are both about _____
I could compare it to _____ because they are both about _____
I could compare it to _____ because they are both about _____



How does it link to the themes? (explain in detail, using quotes)



**Tell the story of 'Poppies' in six images**

--	--	--	--	--	--

Quote	Method/ Key words	Why is this important?
'spasms of paper red, disrupting a blockade'		
'Sellotape bandaged around my hand'		
'I wanted to graze/my nose across the tip of your nose'		
'my stomach busy/making tucks, darts, pleats'		
'without reinforcements of scarf, gloves'		
'hoping to hear/your playground voice'		

**Which of the poems could you compare it too and why?**

I could compare it to \_\_\_\_\_  
because they are both about \_\_\_\_\_

I could compare it to \_\_\_\_\_  
because they are both about \_\_\_\_\_

I could compare it to \_\_\_\_\_  
because they are both about \_\_\_\_\_



**How does it link to the themes? (explain in detail, using quotes)**


**‘War Photographer’ - Quick Questions: answer from memory first before checking if you’re correct.**

1. What is the name of the poet? \_\_\_\_\_
2. How does the poet stress the importance of the war photographer’s work? \_\_\_\_\_
3. How does the poet emphasise the scale of the suffering captured by the photographer? \_\_\_\_\_  
\_\_\_\_\_
4. Where is the war photographer at the start of the poem? \_\_\_\_\_
5. Why does the poet list the following places? ‘Belfast. Beirut. Phnom Penh’  
\_\_\_\_\_
6. What happens to his hands when he develops the photographs? \_\_\_\_\_
7. What contrast does the poet make between ‘home’ and the places he works? \_\_\_\_\_
8. \_\_\_\_\_
9. What sort of problems are there in the places he visits for work?  
\_\_\_\_\_
10. Which of the quotes opposite tell us that he thinks it is essential that someone records the suffering?  
\_\_\_\_\_
11. Out of the ‘hundred agonies’ he photographs, how many will appear in the newspaper? \_\_\_\_\_
12. They are printed in ‘Sunday’s supplement’. What does this suggest?  
\_\_\_\_\_
13. How does the poet criticise the insincerity of the general public’s reaction to the photographs?  
\_\_\_\_\_

**Quote Quiz (Fill in the blanks from memory first before checking if you’re correct.)**

‘\_\_\_\_\_ of suffering set out in  
\_\_\_\_\_ rows’

‘He has a \_\_\_\_\_ to do.’

‘his \_\_\_\_\_, which did not tremble  
\_\_\_\_\_’

‘to do what \_\_\_\_\_ \_\_\_\_\_’

‘A hundred \_\_\_\_\_’

‘The \_\_\_\_\_ eyeballs  
\_\_\_\_\_/with tears between the bath  
and pre-lunch \_\_\_\_\_.’

‘\_\_\_\_\_ do \_\_\_\_\_ care.’



**Tell the story of 'War Photographer' in six images**

--	--	--	--	--	--

Quote	Method/ Key words	Why is this important?
'spools of suffering set out in ordered rows'		
'He has a job to do.'		
'his hands, which did not tremble then'		
'to do what someone must'		
'A hundred agonies'		
'The reader's eyeballs prick/with tears between the bath and pre-lunch beers.'		
'they do not care.'		

**Which of the poems could you compare it too and why?**

I could compare it to \_\_\_\_\_  
because they are both about \_\_\_\_\_

I could compare it to \_\_\_\_\_  
because they are both about \_\_\_\_\_

I could compare it to \_\_\_\_\_  
because they are both about \_\_\_\_\_



**How does it link to themes?** (explain in detail, using quotes)


## Power of identity

Colour code the quotations to show which poem they are from.

Kamikaze

The Emigrée

Checking Out Me History

'I am branded by an impression of sunlight'	'full of powerful incantations'	'Bandage up me eye with me own history Blind me to me own identity'
'was no longer the father we loved'	'I carving out me identity'	'It may be sick with tyrants'
'the bright filled paperweight'	'Nanny, see-far woman'	'a healing star'
'child's vocabulary...banned by the state'	'like a huge flag...fishes/flashing silver...towards the sun'	'I have no passport'
'their father's boat safe/- yes, grandfather's boat – safe'	'Dem tell me'	'My city takes me dancing through the city/of walls'
'Toussaint de thorn...de beacon'	'They mutter death'	' 'they treated him/as though he no longer existed'
'he must have wondered/which had been the better way to die'	'strung out like bunting/on a green-blue translucent sea'	'hopeful stream to freedom river'

What other poems are about the power of identity?

**'Kamikaze' - Quick Questions: answer from memory first before checking if you're correct.**

1. What is the name of the poet? \_\_\_\_\_
2. Which of these two statements are true?
  - The father intended to die for his country but changed his mind
  - The father didn't want to die for his country in the first place
3. How does the poet describe patriotism? \_\_\_\_\_
4. The daughter speculates about his reasons for turning back. What does this suggest about their relationship?  
\_\_\_\_\_
5. What two things does the daughter think might have been the reasons for why he changed his mind?
  - \_\_\_\_\_
  - \_\_\_\_\_
6. What is the effect of the sensory description in the poem? \_\_\_\_\_
7. How does the poet stress the importance of nature? \_\_\_\_\_
8. At what point in the poem does the poet stop using colour and why? \_\_\_\_\_  
\_\_\_\_\_
9. How does life change for the father after his return? \_\_\_\_\_
10. What is the irony in the poem? \_\_\_\_\_

**Quote Quiz (Fill in the blanks from memory first before checking if you're correct.)**

'\_\_\_\_\_ of powerful  
\_\_\_\_\_'

'like a huge  
flag...\_\_\_\_\_/flashing  
\_\_\_\_\_...towards the sun'

'their father's boat \_\_\_\_\_/- yes,  
grandfather's boat - \_\_\_\_\_'

'they \_\_\_\_\_ him/as though he  
no \_\_\_\_\_'

'was \_\_\_\_\_ longer the father we  
\_\_\_\_\_'

'he \_\_\_\_\_ have wondered/which  
had been the \_\_\_\_\_ way to  
\_\_\_\_\_'



**Tell the story of Kamikaze poem in six images**

--	--	--	--	--	--

Quote	Method/ Key words	Why is this important?
'full of powerful incantations'		
'like a huge flag...fishes/flashing silver...towards the sun'		
'they treated him/as though he no longer existed'		
'their father's boat safe/- yes, grandfather's boat - safe'		
'was no longer the father we loved'		
'he must have wondered/which had been the better way to die'		

Which of the poems could you compare it too and why?
I could compare it to _____ because they are both about _____
I could compare it to _____ because they are both about _____
I could compare it to _____ because they are both about _____



How does it link to the big ideas? (explain in detail, using quotes)



**'The Emigrée' - Quick Questions: answer from memory first before checking if you're correct.**

1. What is the name of the poet? \_\_\_\_\_
2. Which of these two statements are true?
  - The speaker is glad to have left the city of her birth
  - The speaker misses the place of her birth
3. What does 'Emigrée' mean?  
\_\_\_\_\_
4. When did she leave the city of her birth? \_\_\_\_\_
5. How does the poet suggest the speaker's birth city has left a permanent mark on her? \_\_\_\_\_
6. What metaphor has been used to describe the city as it now is? \_\_\_\_\_
7. How does the poet stress that the speaker cannot return? \_\_\_\_\_
8. What element of the natural world does she associate with her birth city? \_\_\_\_\_
9. What colour does she associate with her city? \_\_\_\_\_
10. What does this suggest about it? \_\_\_\_\_
11. What has happened to the language of her city? \_\_\_\_\_
12. Why is it important that she 'has no passport'?  
\_\_\_\_\_
13. How does the speaker show her love for her city? \_\_\_\_\_
14. What do 'they' do and who might 'they' be? \_\_\_\_\_
15. How has the poet finished on a positive note? \_\_\_\_\_

**Quote Quiz (Fill in the blanks from memory first before checking if you're correct.)**

'the \_\_\_\_\_  
\_\_\_\_\_paperweight'

'I am \_\_\_\_\_ by an  
impression of \_\_\_\_\_'

'It may be \_\_\_\_\_ with  
\_\_\_\_\_'

'\_\_\_\_\_ vocabulary...  
\_\_\_\_\_ by the state'

'I have no \_\_\_\_\_'

'\_\_\_\_\_ city takes me \_\_\_\_\_  
through the city/of \_\_\_\_\_'



**Tell the story of The Emigrée poem in six images**

--	--	--	--	--	--

Quote	Method/ Key words	Why is this important?
'the bright filled paperweight'		
'I am branded by an impression of sunlight'		
'It may be sick with tyrants'		
child's vocabulary... banned by the state'		
'I have no passport'		
'My city takes me dancing through the city/of walls'		
'They mutter death'		

Which of the poems could you compare it too and why?
I could compare it to _____ because they are both about _____
I could compare it to _____ because they are both about _____
I could compare it to _____ because they are both about _____



How does it link to the themes? (explain in detail, using quotes)

--

**‘Checking Out Me History’ - Quick Questions: answer from memory first before checking if you’re correct.**

1. What is the name of the poet? \_\_\_\_\_
2. What does the speaker feel was the problem with his education? \_\_\_\_\_
3. What was the speaker taught in school? \_\_\_\_\_
4. How has the poet used rhyme in the poem? \_\_\_\_\_
5. What quote opposite suggests he feels that they deliberately chose not to teach him about black history?  
\_\_\_\_\_
6. Why does the poet use Caribbean dialect? \_\_\_\_\_
7. How does the poet create a sense of anger at the start of the poem? \_\_\_\_\_
8. How has the poet emphasised the importance of the figures from black history? \_\_\_\_\_
9. Why does the poet use imagery connected with light or vision in the poem? \_\_\_\_\_
- 10.. Match up each of the black historical figures with their descriptions:

Toussaint L’Ouverture
Nanny de maroon
Mary Seacole

She led a group of runaway slaves to freedom in Jamaica
She travelled to the Crimean War to help nurse the injured soldiers
He led slaves to revolt against Napoleon’s army in Haiti

11. How does the poet show the speaker taking control of his own education at the end of the poem? \_\_\_\_\_  
\_\_\_\_\_

Quote Quiz (Fill in the blanks from memory first before checking if you’re correct.)

‘Dem \_\_\_\_\_ me’

‘ \_\_\_\_\_ up me eye with me own history

\_\_\_\_\_ me to me own identity’

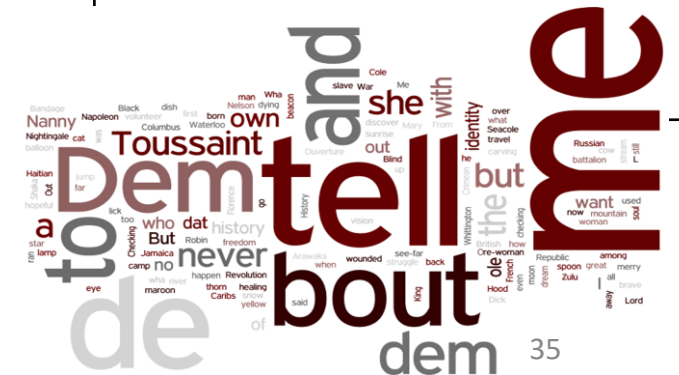
‘Toussaint de \_\_\_\_\_...de \_\_\_\_\_’

Nanny, \_\_\_\_\_ woman

‘hopeful \_\_\_\_\_ to freedom \_\_\_\_\_’

‘a \_\_\_\_\_ star’

‘I \_\_\_\_\_ out me \_\_\_\_\_’





## Summarising Your Learning

- Which poems do you feel confident about /understand more effectively
- Rank order the 15 poems according to how confident you are with understanding ideas about power and conflict in each one. Write them down in rank order.
- Choose 3 that you need to work on in more detail/ complete more independent research on. Write them down.
- Write down a 40 word action plan /bullet point list of what you need to do next to improve your knowledge.

